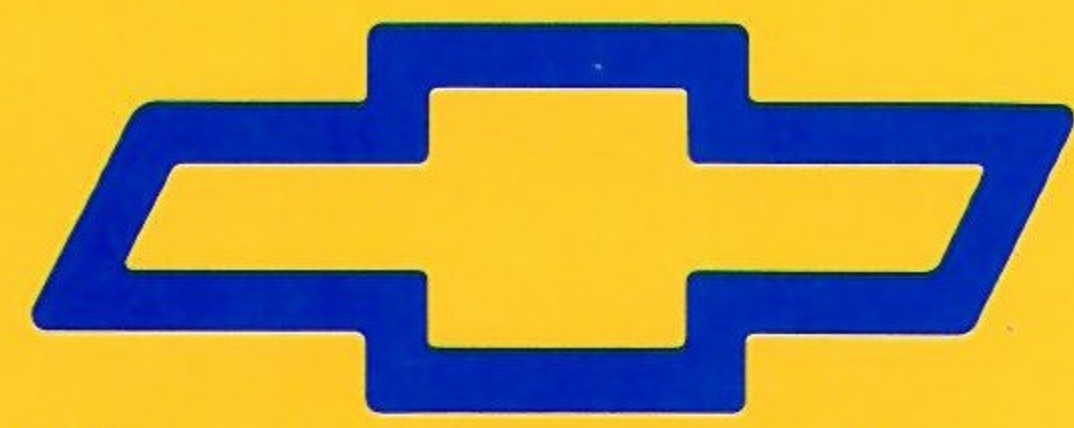


# CHEVY SUBBLAZER 1992



*An American  
Original*





THE HEARTBEAT OF AMERICA  
IS WINNING.

- TAHOE LT
- TAHOE
- SPORT
- STANDARD





*How often does it happen?*

*A nation calls for change, and a new product arrives. The year was 1982. America was restless for a new way of getting from here to there. A car ... a truck ... a vehicle that would break new ground in terms of looks, agility, ruggedness, off-road capability, dependability and just plain fun.*

*Chevy S-10 Blazer was the beautiful answer. The first compact sport utility vehicle: An American original. America took hold of the idea ... and has never let go. Because the concept was so good, it continues to set the standard even today.*

*The '92 S-10 Blazer, the latest in a long line of dependable, long-lasting vehicles, even has a standard 4-wheel anti-lock brake system (ABS) in all models, providing excellent control both on-road and off-road, in all kinds of weather.*





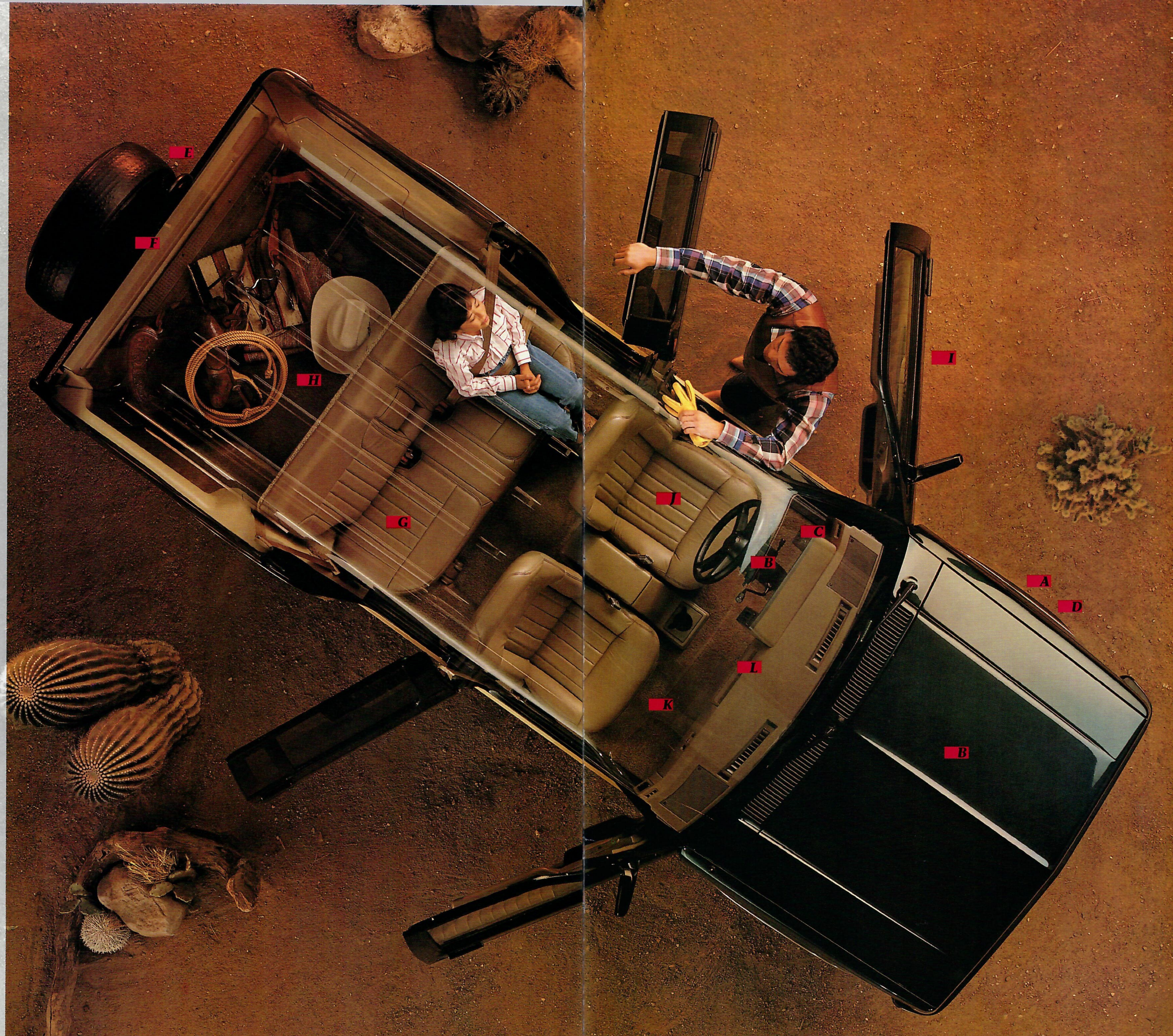
## RAISING THE STANDARDS, YEAR AFTER YEAR

Since its arrival in 1982, S-10 Blazer has set and reset the standards for sport utility vehicles. It has become roomier, more powerful and more comfortable. And today it offers more ways to express yourself than ever before. Come see what the 1992 S-10 Blazer has in store for you.

**A** A four-wheel anti-lock brake system (ABS) that functions in both 2- and 4-wheel drive is now standard in all models. This system operates at all four wheels to help the driver maintain control in severe braking situations. It also allows the driver to steer around objects while braking.

**B** The S-10 Blazer shown here has an optional Enhanced Powertrain Package which includes an enhanced 4.3 Liter (262 cu. in.) V6 engine with Central-Port Fuel Injection that generates 200 HP at 4500 RPM. Other items in the package include a 4-speed automatic overdrive transmission and extra-capacity cooling. (The S-10 Blazer's standard powertrain is a 4.3 Liter V6 engine with 5-speed manual overdrive transmission.)

**C** Insta-Trac 4-wheel drive. The patented system that revolutionized the whole concept of going off-road. Now with an optional electric 4x4 transfer case shifter button conveniently mounted on the instrument panel.



**D** Independent front suspension contributes greatly to S-10 Blazer's smooth ride.

**E** Tows like a truck — a trailering capacity of up to 6000 lbs. for 2WD models and 5500 lbs. for 4x4 models. (When properly equipped, and includes the weight of trailer, passengers and cargo.)

**F** Lift up the new-for-'92 frameless rear glass window, drop down the tailgate. You get an opening almost 3 ft. by 4 ft. for quick, easy loading and unloading.

**G** A fresh look at luxury ... the S-10 Blazer Tahoe LT (shown here). It's an optional trim level with Ultrasoft leather seating surfaces, new interior, Custom Two-Tone paint with multi-shaded stripe, new cast-aluminum wheels and more.

**H** Loads of load space. A 4-Door S-10 Blazer with rear seat down holds up to 74.3 cu. ft. of cargo.

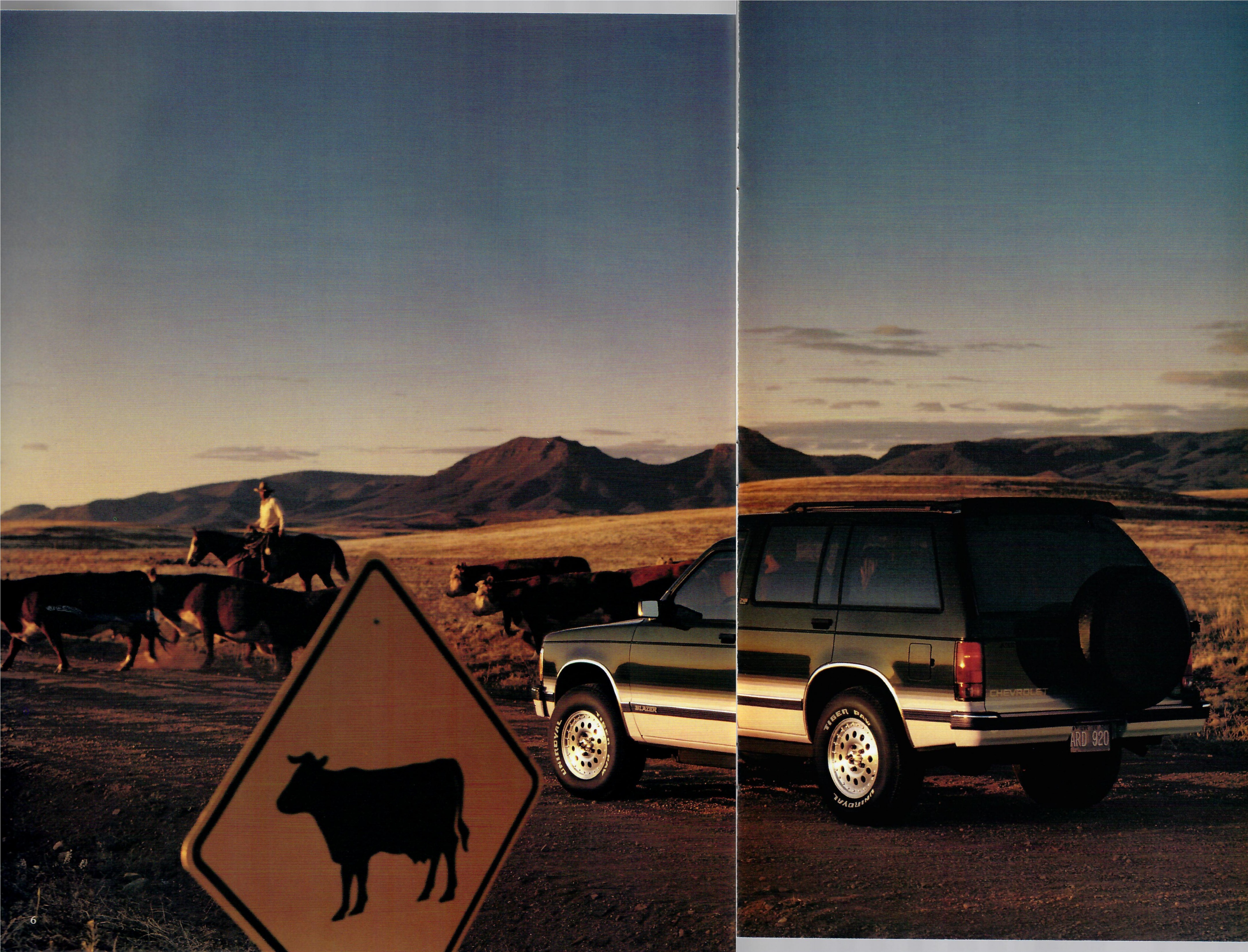
**I** Anti-corrosion treatments so effective that the S-10 Blazer you buy requires no additional rustproofing.

**J** Front bucket seats with redesigned front and back cushions for solid comfort on long trips.

**K** Color-keyed carpeting with thick insulation covers passenger and rear areas. Soaks up road noise. Looks and feels great.

**L** New optional compact disc player in an AM/FM stereo with seek-scan, digital clock and premium front and rear speakers.





## THERE'S A LOT TO FEEL SECURE ABOUT

Begin with S-10 Blazer's standard four-wheel anti-lock brake system (ABS), which automatically controls pressure to each brake at each wheel to minimize wheel lockup. This improves the vehicle's stability while braking and helps the driver maintain control with the ability to steer around obstacles, even during hard stops. ABS also adjusts quickly to changing braking surfaces, such as wet-to-dry surfaces or hardtop-to-dirt roads.

Then there's S-10 Blazer's Insta-Trac 4-wheel-drive system, standard in all 4x4 models, which allows you to quickly shift in and out of 4-wheel-drive High without stopping. Plus, S-10 Blazer's standard SAF (Self-Aligning Feature) steering wheel, which is designed to automatically align itself with the driver's body in the event of a frontal collision to help reduce chest impact and injury. For more safety features, see the entire list on page 27.





## POWER TO PULL YOU THROUGH

Sure, the S-10 Blazer cuts a smart figure around town. But out on the open road ... or off the beaten path ... that's where this durable, dependable sport utility vehicle is at its best. S-10 Blazer has plenty of power for passing, climbing and pulling a trailer. In fact, it has the biggest V6 in the compact sport utility class. Translation: S-10 Blazer moves. With a maximum towing rating of 6000 lbs. (including trailer, passengers and cargo), a properly equipped 2WD S-10 Blazer out-tows anything in its class. Chalk it all up to a tough, ladder-type all-steel frame, a snappy V6 engine, rugged transmission and 3.08-to-1 (or optional 3.42-to-1) rear axle ratio.



■ A look. A feeling. A top-of-the-line style all its own. The optional Tahoe LT trim is available with both 2-door and 4-door S-10 Blazer models. Tahoe LT has a rich Custom Two-Tone exterior with a multi-shaded striped decal that stylishly blends both paint tones. Cast-aluminum wheels make a strong statement with honeycomb design on 2WD models or premium aluminum design on 4x4 models. Bumpers are color-keyed to the lower body color. The S-10 Blazer Tahoe LT also comes with deep-tinted glass and all-season white-lettered tires — and this is just the outside. Turn the page for the rest of the LT story.

■  
*4-Door S-10 Blazer 4x4 with optional Tahoe LT trim, including a Custom Two-Tone in Forest Green Metallic with Khaki lower accents.*







## TAHOE LT INTERIOR

■ The S-10 Blazer Tahoe LT interior surrounds you with unexpected luxury. There are Ultrasoft leather seating surfaces and upper door trim panels of leather that feel as rich as they look. Carpeted lower inserts, map pockets, cloth headliner, visors and padded console add to the richness. Tahoe LT also includes air conditioning, electronic speed control, deep-tinted glass, power door locks, power windows, full carpeting, an AM/FM stereo with cassette tape player, and much, much more. See page 20 for details on LT trim.

■ 4-Door S-10 Blazer interior in Beige with optional luxury-level Tahoe LT trim. The LT trim level includes 5-passenger seating and leather seating surfaces. The rear bench seat includes a fold-down center armrest.

■ Tahoe LT instrument panel with 4-spoke leather-wrapped steering wheel, full gage package, optional compact disc player, and optional electric 4x4 transfer case shifter button (upper left of steering wheel).



■ **Tahoe.** Standard with 4-door models and optional with 2-door models, Tahoe trim includes Rally Wheels with trim rings on 2WD models and argent steel wheels with trim rings on 4x4 models. Inside refinements include reclining front bucket seats in 2-door models or a 3-passenger front bench seat in 4-door models, plus rich, color-keyed carpeting and two rearview-mirror-mounted reading lamps.

■ **Sport.** This optional trim gives an aggressive, “blacked-out” look to the S-10 Blazer. Interior distinctions include Deluxe Cloth on the reclining front bucket seats, a black 4-spoke leather-wrapped steering wheel and a center console with cup holder.

*In foreground: 2-Door S-10 Blazer 4x4 in Frost White with optional Sport trim. In background: 4-Door S-10 Blazer 2WD in Aspen Blue Metallic with standard Tahoe trim.*

4-Door S-10 Blazer 2WD in Blue with Tahoe trim including Special Custom Cloth. The Tahoe trim also includes a 3-passenger front bench seat. An optional 3-passenger rear bench seat is also shown.

S-10 Blazer 4x4 in Charcoal with optional Sport trim, including Deluxe Cloth and reclining front bucket seats. The 4-door model, shown left, also includes a 3-passenger rear bench seat.





## S-10 BLAZER

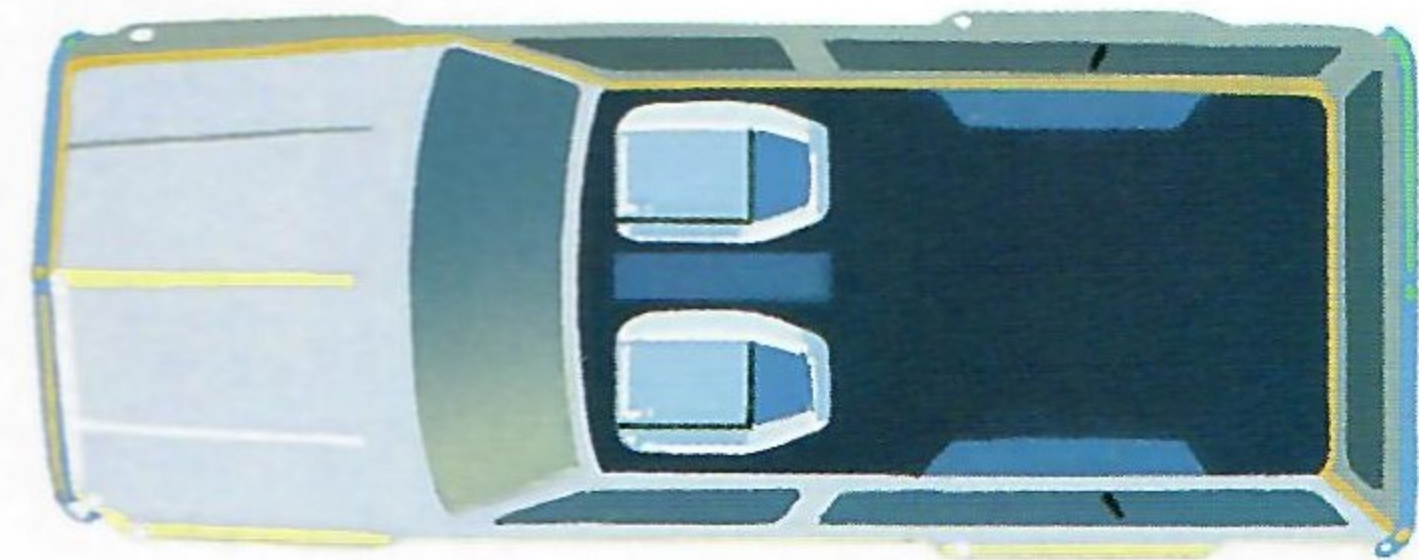
Standard is hardly the word for a vehicle that so readily satisfies your taste for adventure. The standard S-10 Blazer is available as a 2-door only, in either 2WD or 4x4 models. It comes with a 4.3 Liter (262 cu. in.) Vortec V6 engine, 5-speed manual overdrive transmission and 4-wheel anti-lock brake system (ABS). Four-wheel-drive models also get the patented Insta-Trac 4x4 system. Standard styling includes: a chromed grille and chromed bumpers; tinted glass; black Below Eyeline mirrors; and 15" x 6" steel wheels.

2-Door S-10 Blazer 4x4  
in Apple Red.

2-Door S-10 Blazer vinyl  
interior in Gray.

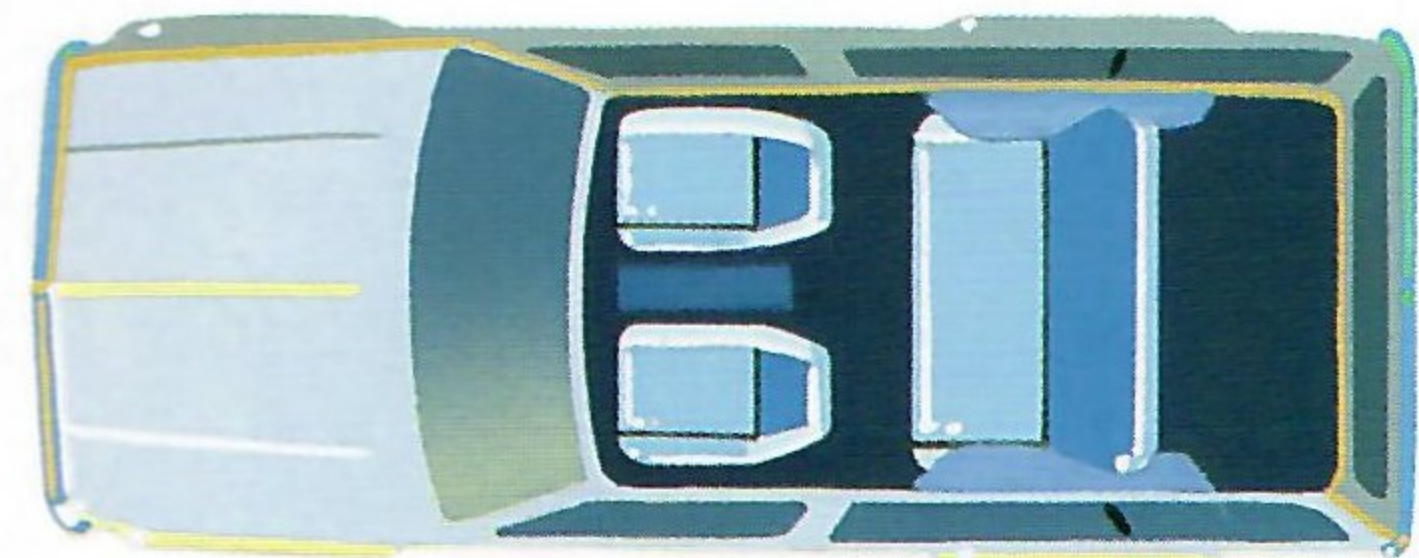






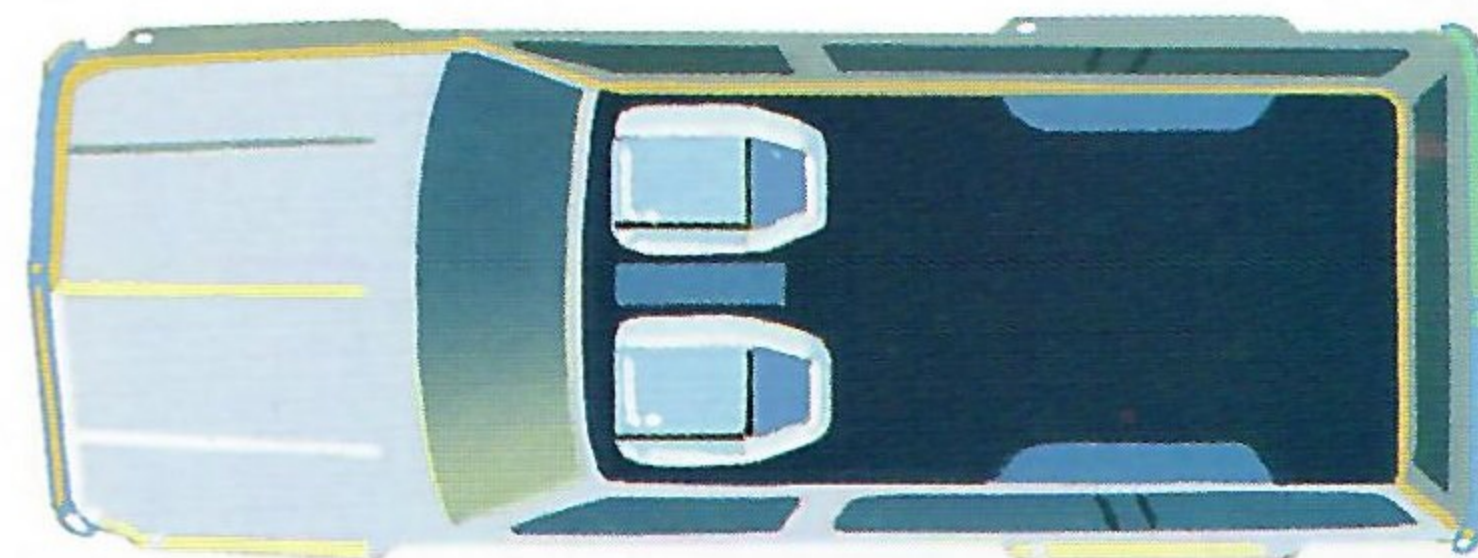
#### 2-DOOR SEATING

2 passengers  
(front buckets).



4 passengers  
(front buckets,  
2-pass. rear  
bench).

#### 4-DOOR SEATING



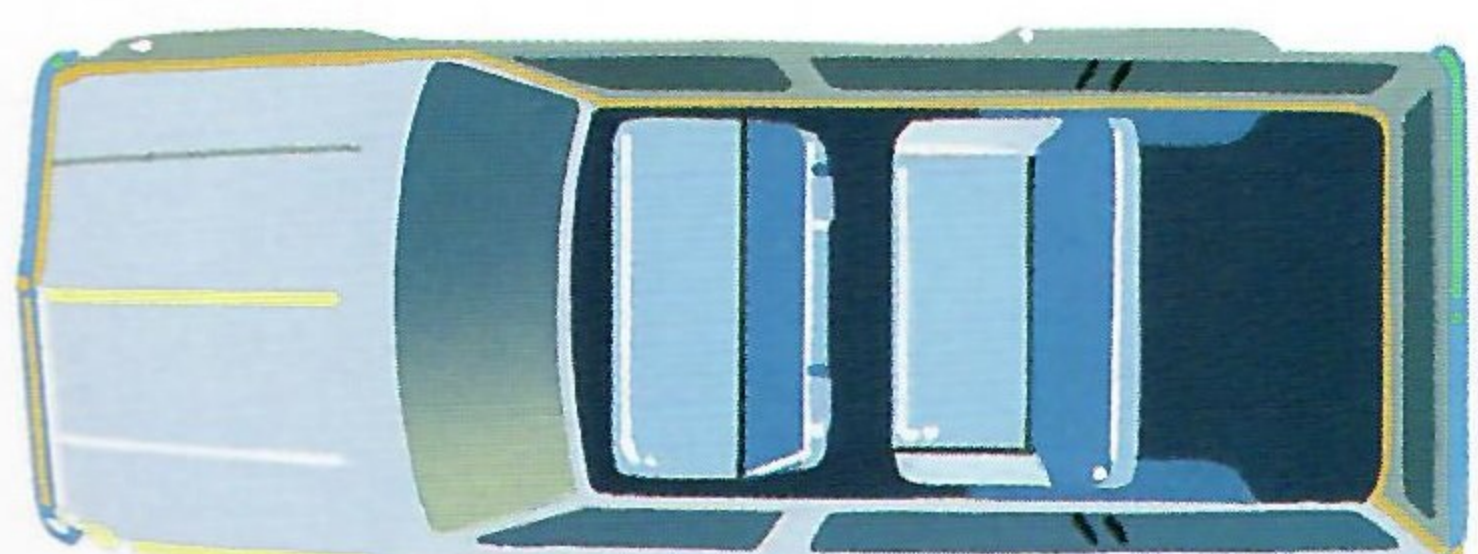
2 passengers  
(front buckets).



3 passengers  
(3-pass. front  
bench).

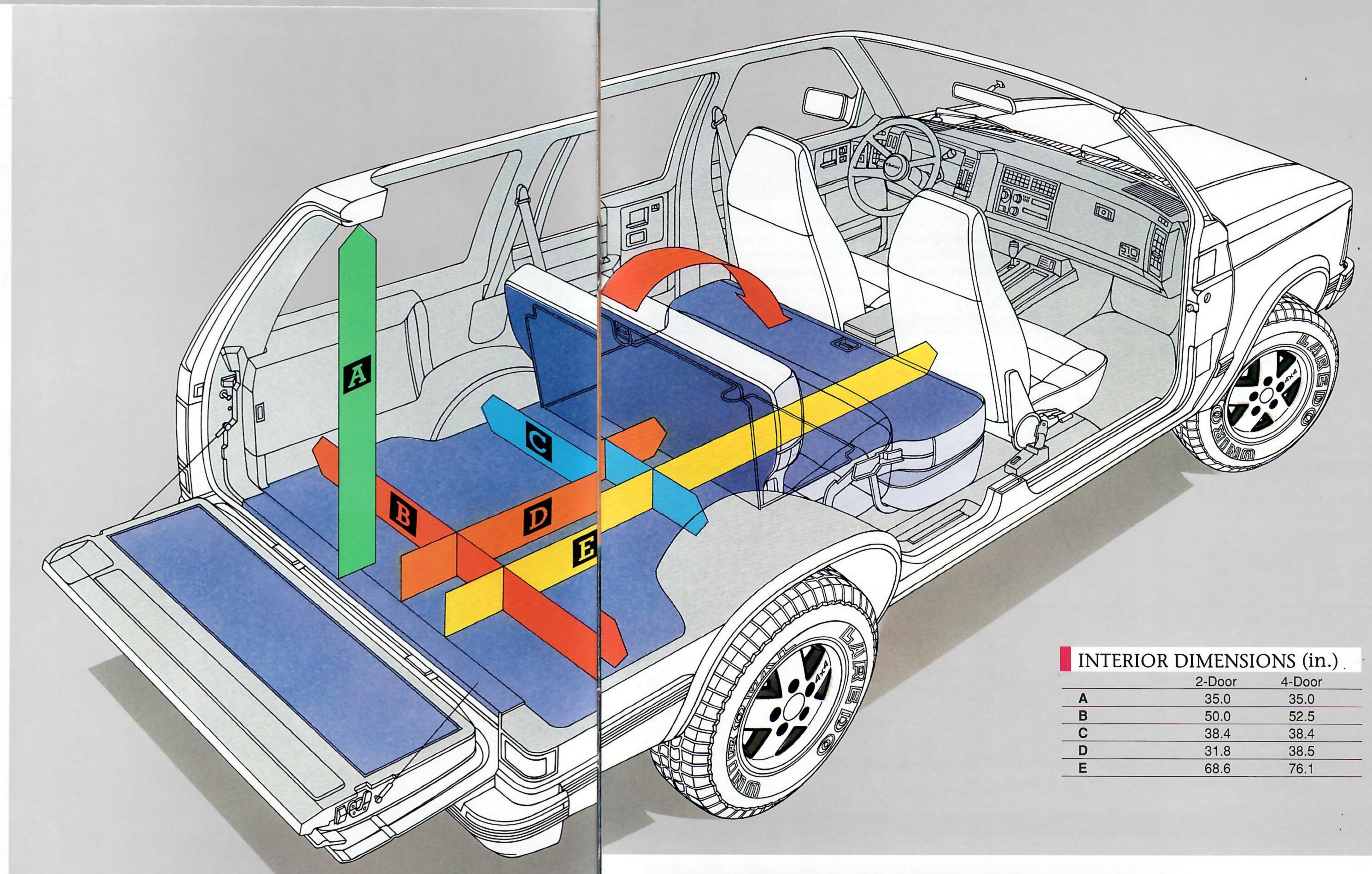


5 passengers  
(front buckets,  
3-pass. rear  
bench).



6 passengers  
(3-pass. front  
bench and rear  
bench).

Rear bench seat  
in 4-door models  
offers 52.6" of  
hip room and  
over 35" of leg  
room — comfort-  
able seating for  
3 adults.



#### SEATING POSSIBILITIES

Model	Standard	Optional	Trim Levels
2-door 2WD	2	4	Standard, Tahoe, Sport, Tahoe LT
2-door 4x4	2	4	Standard, Tahoe, Sport, Tahoe LT
4-door 2WD	3	2,5,6	Tahoe
4-door 2WD	2	5	Sport
4-door 2WD	5	-	Tahoe LT
4-door 4x4	6	5	Tahoe
4-door 4x4	5	-	Sport, Tahoe LT



#### INTERIOR DIMENSIONS (in.)

	2-Door	4-Door
A	35.0	35.0
B	50.0	52.5
C	38.4	38.4
D	31.8	38.5
E	68.6	76.1

## S-10 BLAZER FEATURES

S-10 Blazer is whatever you want it to be — from a comfortable passenger vehicle to a rugged cargo hauler. And S-10 Blazer offers plenty of flexibility when it comes to passenger space vs. cargo space. All of which helps explain why the S-10 Blazer is the sport utility vehicle that more Americans depend on than any other make.



S-10 Blazer with optional equipment shown: roof-mounted luggage rack with rear window air deflector, swing-out spare tire carrier with tire cover, rear window defogger and wiper.



Optional power windows and power door locks.



MODEL SELECTOR



2-Door 2WD S-10 Blazer



2-Door 4x4 S-10 Blazer



4-Door 2WD S-10 Blazer



4-Door 4x4 S-10 Blazer

	Std. Seating Capacity	Opt. Seating Capacity	Wheelbase (in.)	Max. Cargo Space (cu. ft.)	Max. GVWR (lbs.) <sup>1</sup>	Std. Payload (lbs.) <sup>2</sup>
	2	4	100.5	67.3	4350	1130
	2	4	100.5	67.3	4700	1183
	3	2,5,6	107	74.3	4850	1437
	6 <sup>3</sup>	5	107	74.3	5100	1349

<sup>1</sup>GVW (Gross Vehicle Weight) includes weight of vehicle, passengers, equipment and cargo. <sup>2</sup>Payload includes passengers, equipment and cargo. <sup>3</sup>Standard seating in 4-Door Sport 4x4 and Tahoe LT 4x4 is five (front buckets/3-passenger rear bench), with no optional seating.

TRIM FEATURES<sup>1</sup>

INTERIOR	Std.	Tahoe	Sport	Tahoe LT
Armrests: Both doors, padded	■	■	■	■
Center Console	■ <sup>2</sup>	■	■	■
Floor Coverings:				
Color-keyed carpeting, including rear compartment	■	■	■	■
Carpeted tailgate, lower quarter panels and rear quarter area	■	■	■	■
Floor mats, front/rear, color-keyed	■	■	■	■
Glass: Tinted, all windows	■	■	■	■
Headliner: Cloth, color-keyed	■	■	■	■
Mirrors:				
Rearview, 10" prismatic	■	■	■	■
Rearview with dual reading lamps	■	■	■	■
Radio:				
AM, electronically tuned, with digital clock	■	■	■	■
AM/FM, electronically tuned, with cassette tape player and digital clock	■	■	■	■
Steering Wheels:				
Black Deluxe, 4-spoke	■	■	■	■
Leather-wrapped, 4-spoke	■	■	■	■

INTERIOR (continued)	Std.	Tahoe	Sport	Tahoe LT
Seating:				
Foam-cushioned Custom Vinyl front bucket seats	■	■	■	■
Foam-cushioned Custom Vinyl front bucket seats (with reclining seat-backs)	■	■	■	■
Foam-cushioned Special Custom Cloth front bucket seats with reclining seat-backs (no-cost option)	■	■	■	■
Foam-cushioned Deluxe Cloth front bucket seats with reclining seat-backs	■	■	■	■
Ultrasoft leather seating surfaces on high-back reclining front buckets and folding rear bench with center folding armrest	■	■	■	■
Foam-cushioned rear bench seat	■ <sup>3</sup>	■ <sup>3</sup>	■ <sup>3</sup>	■
Safety Belts: All seating positions, with shoulder belts at all front-seat outboard seating positions	■	■	■	■
EXTERIOR	Std.	Tahoe	Sport	Tahoe LT
Paint: Custom Two-Tone with striping	■	■	■	■
Bumpers:				
Chromed with rub strip	■	■	■	■
Body-colored with rub strip	■	■	■	■
Moldings:				
Body-side, black with bright accent	■	■	■	■
Quarter-window, black	■	■	■	■
Wheel-opening, bright aluminum	■	■	■	■
Wheel-opening, black	■	■	■	■
Windshield, black	■	■	■	■
Engine Compartment Lamp	■	■	■	■

<sup>1</sup>The S-10 Blazer trim features indicated reflect only a portion of the total content of each trim level. See your Chevy dealer for complete listings. <sup>2</sup>With bucket seats only. <sup>3</sup>Not included in trim level for 2WD 4-door models.

PREFERRED EQUIPMENT GROUPS

These convenient option packages make it easy to tailor the S-10 Blazer to your exact specifications and can save you money. You would pay appreciably more buying all the options in a Preferred Equipment Group as individual options.  
(Savings based on comparison of Manufacturer's Suggested Retail Price of option packages vs. M.S.R.P. of individual options purchased separately.)

S-10 BLAZER	2-Door			4-Door		
	Std.	Tahoe/Sport		Tahoe/Sport		
	1	2	3	1	2	3
GROUP 1						
Standard Trim Level (Tahoe or Sport with 4-door models)	■	■	■	■	■	■
GROUP 2						
Convenience Group: TILT-WHEEL™ Adjustable Steering Column and intermittent wipers		■	■	■	■	■
Glass: Deep-tinted with light-tinted rear window <sup>1</sup>		■	■	■	■	■
Radio: ETR AM/FM stereo w/seek-scan and digital clock <sup>1</sup>		■		■	■	
Seats: Reclining high-back buckets (4-door models only) <sup>1</sup>				■	■	■
Seat: Rear bench, folding		■	■	■	■	■
Tires: P205/75R-15 white-lettered <sup>1</sup>		■	■	■	■	■

GROUP 3						
Air Conditioning			■		■	
Convenience Group: Electric tailgate release and rear-window defogger			■		■	
Luggage Carrier and Rear-Window Air Deflector Package		■			■	
Convenience Group: Power door locks and power windows		■			■	
Radio: ETR AM/FM stereo w/seek-scan, cassette tape player and digital clock <sup>1</sup>		■			■	
Speed Control: Electronic		■			■	
Wheels: Aluminum		■			■	
Window Wiper/Washer: Rear		■			■	

TAHOE LT						
			1			1
GROUP 1						
Tahoe LT Trim Level		■			■	
Air Conditioning		■			■	
Convenience Group: TILT-WHEEL™ Adjustable Steering Column and intermittent wipers		■			■	
Convenience Group: Electric tailgate release and rear-window defogger		■			■	
Glass: Deep-tinted with light-tinted rear window <sup>1</sup>		■			■	
Luggage Carrier and Rear-Window Air Deflector Package		■			■	
Mirrors: Exterior, electric remote-controlled		■			■	
Mirrors: Interior, visor, lighted, LH and RH		■			■	
Radio: ETR AM/FM stereo w/seek-scan, cassette tape player and digital clock <sup>1</sup>		■			■	
Speed Control: Electronic		■			■	
Window Wiper/Washer: Rear		■			■	

<sup>1</sup>Upgrade allowed.

INDIVIDUAL OPTIONS

(May be added to any Preferred Equipment Group if not already included.)				
TRIM LEVELS	Std.	Tahoe	Sport	Tahoe LT
Air Conditioning	■	■	■	R
Fog Lamps (2WD models only)	■	■	■	■
Battery, Heavy-Duty (incl. w/Cold Climate Package)	■	■	■	■
Carrier, Spare Tire (incl. wheel and exterior cover)	■	■	■	■
Console, Center	■	■ <sup>1</sup>	■	■
Cooling Systems:				
Heavy-duty radiator	■	■	■	■
Heavy-duty radiator and transmission oil cooler	■	■	■	■
Heavy-duty radiator and engine oil cooler	■	■	■	■
Convenience Group: Power door locks and power windows	■	■	■	■
Convenience Group: TILT-WHEEL™ Adjustable Steering Column and intermittent wipers	■	■	■	R
Floor Coverings:				
Rubber, full-floor, charcoal (replaces carpeting)	■	■	■	■
Mats, front: color-keyed (NA w/rubber floor covering)	■	■	■	■
Mats, rear: color-keyed (NA w/rubber floor covering)	■	■	■	■
Glass: Deep-tinted	■	■	■	R
Instrumentation: Electronic	■	■	■	■
Luggage Carrier: Black (incl. rear-window air deflector)	■	■	■	R
Mirrors:				
Electric remote	■	■	■	R
Lighted visor, LH and RH	■	■	■	R
Moldings: Wheel-opening, black <sup>2</sup>	■	■	■	■
Radios:				
AM/FM, electronically tuned, with seek-scan and digital clock	■	■	■	■
AM/FM, electronically tuned, with seek-scan, cassette tape player and digital clock	■	■	■	R
AM stereo <sup>3</sup> /FM stereo, electronically tuned, with cassette tape player, graphic equalizer and digital clock	■	■	■	■
AM/FM, electronically tuned, with seek-scan, compact disc player and digital clock	■	■	■	■
Rear Window Convenience Package: Electric tailgate release and rear-window defogger	■	■	■	R
Rear Window Wiper/Washer (if ordered w/deep-tinted glass, req. electric tailgate release and rear-window defogger)	■	■	■	R
Seating:				
Rear bench, 2-passenger, folding (2-door models only)	■	■	■	■
Rear bench, 3-passenger, folding (2WD 4-door models only) (standard in 4x4)	■	■	■	■
Front bench, 3-passenger, folding (std. in 4-door models)	■	■	■	■
Shield Package, 4x4 only (incl. transfer case and front differential skid plates plus steering linkage shield)	■	■	■	■
Shock Absorbers: Heavy-duty, front and rear, 4x4 only (NA in 2-door models w/suspension package, incl. in 2-door models w/heavy-duty front suspension)	■	■	■	■
Speed Control: Electronic	■	■	■	R
Springs: Front, heavy-duty, 4x4 only (NA in 2-door models w/suspension package, incl. in 2-door models with heavy-duty shock absorbers)	■	■	■	■
Suspension Package, 2-Door 4x4 only: incl. special gas shocks, upsized torsion bar, jounce bumpers and stabilizer bar (req. P235/75R-15 W/L tires, NA w/heavy-duty shock absorbers or heavy-duty front springs)	■	■	■	■
Window: Sliding side (2-door models only)	■	■	■	■

■-Optional. ■-Included in trim level indicated. R- Required option with Tahoe LT trim. <sup>1</sup>Not available with front bench seat. <sup>2</sup>Required in certain states when ordering optional P235/75R-15 on- and off-road tires. <sup>3</sup>Receives C-Quam<sup>®</sup> stereo broadcasts. Most AM stereo stations across the country broadcast in C-Quam, but some do not. Check with your local stations for compatibility in your area. NOTE: The information provided on individually available options for S-10 Blazers is, by no means, complete. See your Chevy dealer for full listings, plus any special ordering requirements related to the options you want.



SPECIFICATIONS

	2WD		4x4	
	2-Door	4-Door	2-Door	4-Door
GVW Rating (lbs.) <sup>1</sup>	4350	4850	4700	5100
Payload Rating (lbs.) <sup>2</sup>	1130	1437	1183	1349
Engine – Liters (cu. in.)				
– Gas/EFI <sup>3</sup>	4.3 (262) V6	4.3 (262) V6	4.3 (262) V6	4.3 (262) V6
Front Suspension – Type	Independent – Coil Springs	Independent – Coil Springs	Independent – Torsion Bar	Independent – Torsion Bar
– Axle Capacity (lbs.)	2200	2200	2400	2400
Rear Suspension – Type	Hypoid Drive – Leaf Springs	Hypoid Drive – Leaf Springs	Hypoid Drive – Leaf Springs	Hypoid Drive – Leaf Springs
– Axle Capacity (lbs.)	2900	2900	2900	2900
Brakes				
– Front Disc/Rear Drum	Power	Power	Power	Power
Anti-Lock Brake System	Four-Wheel	Four-Wheel	Four-Wheel	Four-Wheel
Electrical				
– Battery (CCA)	525	525	525	525
– Generator (amps)	100	100	100	100
Fuel Tank Capacity (gal.)	20	20	20	20
Steering – Type	Power	Power	Power	Power
Transmission – Manual	5-Speed w/OD	5-Speed w/OD	5-Speed w/OD	5-Speed w/OD
Transfer Case	–	–	NP 231	NP 231
Tires <sup>4</sup>	P205/75R-15	P205/75R-15	P205/75R-15	P205/75R-15
Wheels (in.)	15 x 6.0	15 x 7.0	15 x 6.0	15 x 6.0

<sup>1</sup>Gross Vehicle Weight includes vehicle, passengers, equipment and cargo. <sup>2</sup>Payload includes passengers, equipment and cargo. Payload ratings are based on 1992 Licensing Data at time of printing. <sup>3</sup>Electronic Fuel Injection. <sup>4</sup>Optional tires include P235/75R-15 tires. Tire chains should not be used on S-10 Blazers equipped with either of these tires because they could cause damage to these vehicles.

ENGINE SPECS

	Standard <sup>1</sup>	Optional <sup>2</sup>
Displacement – Liters (cu. in.)	4.3 (262) V6 w/EFI <sup>3</sup>	4.3 (262) V6 w/CPI <sup>4</sup>
Engine Ordering Code	LB4	R8Y
Bore and Stroke (in.)	4.00 x 3.48	4.00 x 3.48
Compression Ratio	9.1 to 1	9.1 to 1
SAE Net HP @ RPM	160 @ 4000	200 @ 4500
SAE Net Torque (lb.-ft.) @ RPM	230 @ 2800	260 @ 3600

<sup>1</sup>Available only with 5-speed manual transmission with overdrive. <sup>2</sup>Available only as part of Enhanced Powertrain Package (RPO R8Y) which includes a 4-speed automatic overdrive transmission and extra-capacity cooling. <sup>3</sup>Electronic Fuel Injection. <sup>4</sup>Central-Port Fuel Injection.

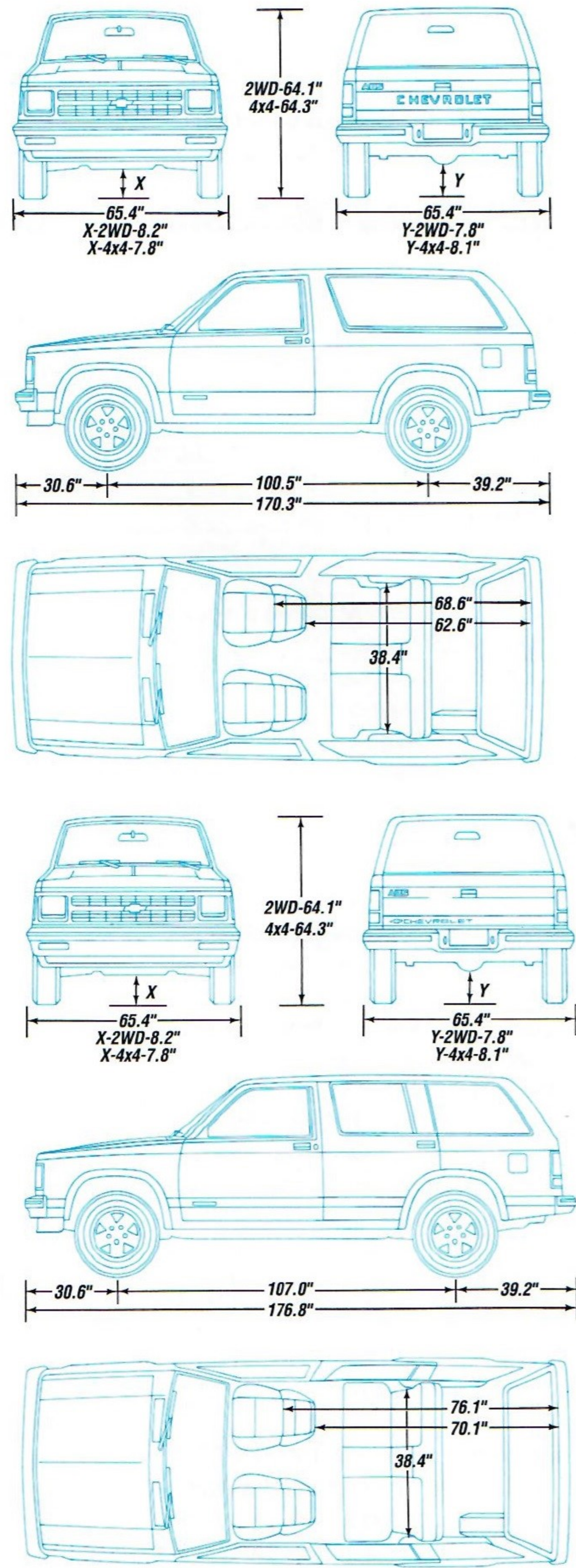
TRAILERING – Ball Type Hitch

	(Recommended – Black, Required – Red)					
Trailer Classification	Light	Medium	Medium	Heavy	Heavy	Heavy
Maximum Gross Trailer Weight (lbs.)	2000	4000 <sup>1</sup>	4000	4500 <sup>1</sup>	6000	5500
Maximum Tongue Load (lbs.)	200	500	500	550	750	700
Vehicle Series	2WD/4x4	2WD/4x4	2WD/4x4	2WD	2WD	4x4
Transmission (R8Y <sup>2</sup> – Auto., MM5 <sup>3</sup> – Manual)	MM5/R8Y	MM5	R8Y	MM5	R8Y	R8Y
Engine and Axle Ratio	4.3L Gas w/EFI	3.08	3.08 <sup>4</sup>	3.08	3.42	
with Maximum Trailer Weight (lbs.)	4.3L Gas w/CPI				3.08	3.08
					(5000)	(4500)
					3.42	3.42
					(6000)	(5500)

Light-Duty Trailering Special Package (includes deadweight trailer hitch <sup>5</sup> , heavy-duty radiator and 5-wire wiring harness)	Z72					
Heavy-Duty Trailering Special Package (includes weight-distributing hitch platform and 7-wire wiring harness)		Z82	Z82	Z82	Z82	Z82
Transmission Oil Cooler			V02		V02	
Engine Oil Cooler		KC4	KC4	KC4	KC4	KC4
Heavy-Duty Shock Absorbers		F51	F51	F51	F51	F51
Electronic Speed Control		K34	K34	K34	K34	K34
Locking Rear Axle		G80	G80	G80	G80	G80

<sup>1</sup>Manual transmission rating. <sup>2</sup>Optional 4-speed automatic transmission with overdrive — includes 4.3L V6 w/CPI. <sup>3</sup>Standard 5-speed manual transmission with overdrive — includes 4.3L V6 with EFI. <sup>4</sup>3.42 ratio required with 4x4 models and P205/75R-15 tires. <sup>5</sup>Interference may occur if vehicle is equipped with RPO P16 spare tire carrier or if trailer is equipped with winch or tongue jack. Trailering-related standard equipment: power steering, power brakes, 20-gallon fuel tank, 100-amp generator and front stabilizer bar.

DIMENSIONS



The trailering chart to the left indicates the required and recommended options for towing light, medium or heavy trailers with your Chevy S-10 Blazer. Recommended trailering equipment is indicated in black, and required equipment in red. The chart also provides Regular Production Option (RPO) numbers to make ordering easier for you. Although S-10 Blazers can be purchased with manual transmissions, Chevrolet strongly recommends using the 4-speed automatic transmission for towing. General trailering information is provided on pages 24-25. It includes a chart on dealer-installed trailer hitches, details on 5-wire and 7-wire wiring harnesses, and a GCWR (Gross Combination Weight Rating) chart for determining powertrains and rear axle ratios with automatic and manual transmissions.

NOTE: Maximum gross trailer weight includes all passengers and cargo in the S-10 Blazer, plus any cargo in the trailer.

SPECIFICATIONS/DIMENSIONS/TRAILERING/COLOR

COLORS<sup>1</sup>

2-DOOR INTERIOR COLORS	Blue	Charcoal	Garnet Red	Gray	Beige <sup>2</sup>
------------------------	------	----------	------------	------	--------------------

<b>STANDARD</b>					
Custom Vinyl High-Back Bucket Seats (std.)					
Special Custom Cloth					
Reclining High-Back Bucket Seats (opt.)					

<b>TAHOE</b>					
Custom Vinyl or Special Custom Cloth					
Reclining High-Back Bucket Seats					
Ultrasoft Leather Seating Surfaces on Reclining High-Back Bucket Seats					

<b>SPORT</b>					
Deluxe Cloth Reclining High-Back Bucket Seats					
Ultrasoft Leather Seating Surfaces on Reclining High-Back Bucket Seats					

4-DOOR INTERIOR COLORS	Blue	Charcoal	Garnet Red	Gray	Beige <sup>2</sup>
------------------------	------	----------	------------	------	--------------------

<b>TAHOE (STANDARD)</b>					
Special Custom Cloth					
Bench Seat					
Special Custom Cloth					
Reclining High-Back Bucket Seats					

<b>SPORT</b>					
Deluxe Cloth Reclining High-Back Bucket Seats					
<b>TAHOE LT</b>					
Ultrasoft Leather Seating Surfaces on Reclining High-Back Bucket Seats					

EXTERIOR COLORS	Blue	Charcoal	Garnet Red	Gray	Beige <sup>2</sup>
-----------------	------	----------	------------	------	--------------------

Midnight Black					
Aspen Blue Metallic					
Royal Blue Metallic					
Sky Blue					
Garnet Red					
Steel Gray Metallic					
Aquamarine Green					
Forest Green Metallic					
Apple Red					
Frost White					

<sup>1</sup>Ask your Chevy dealer for information on Special and Deluxe Two-Tone combinations, body striping, exterior color possibilities and actual trim availability. Note that the Tahoe LT is available in Custom Two-Tone only. <sup>2</sup>Tahoe LT only.

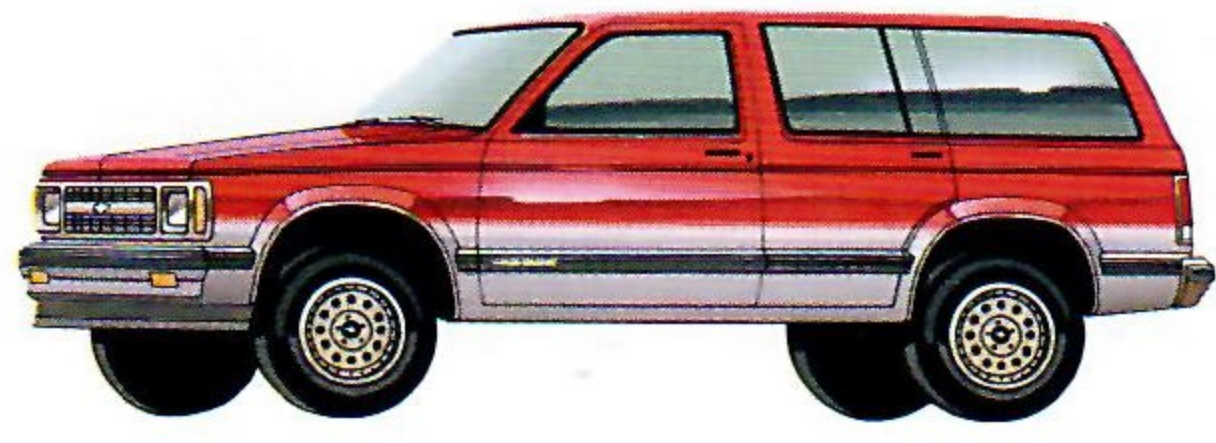
OPTIONAL TWO-TONES



Special Two-Tone with upper stripe. Available on standard 2-door model only.



Deluxe Two-Tone. Available only as a part of the Tahoe trim package.



Custom Two-Tone. Included with optional Tahoe LT trim (shown). Available on other models without striping.

Midnight Black<sup>1</sup>

Aspen Blue Metallic

Royal Blue Metallic<sup>1</sup>

Sky Blue

Garnet Red<sup>1</sup>

Steel Gray Metallic

Aquamarine Green<sup>2</sup>

Forest Green Metallic

Apple Red<sup>1</sup>

Frost White

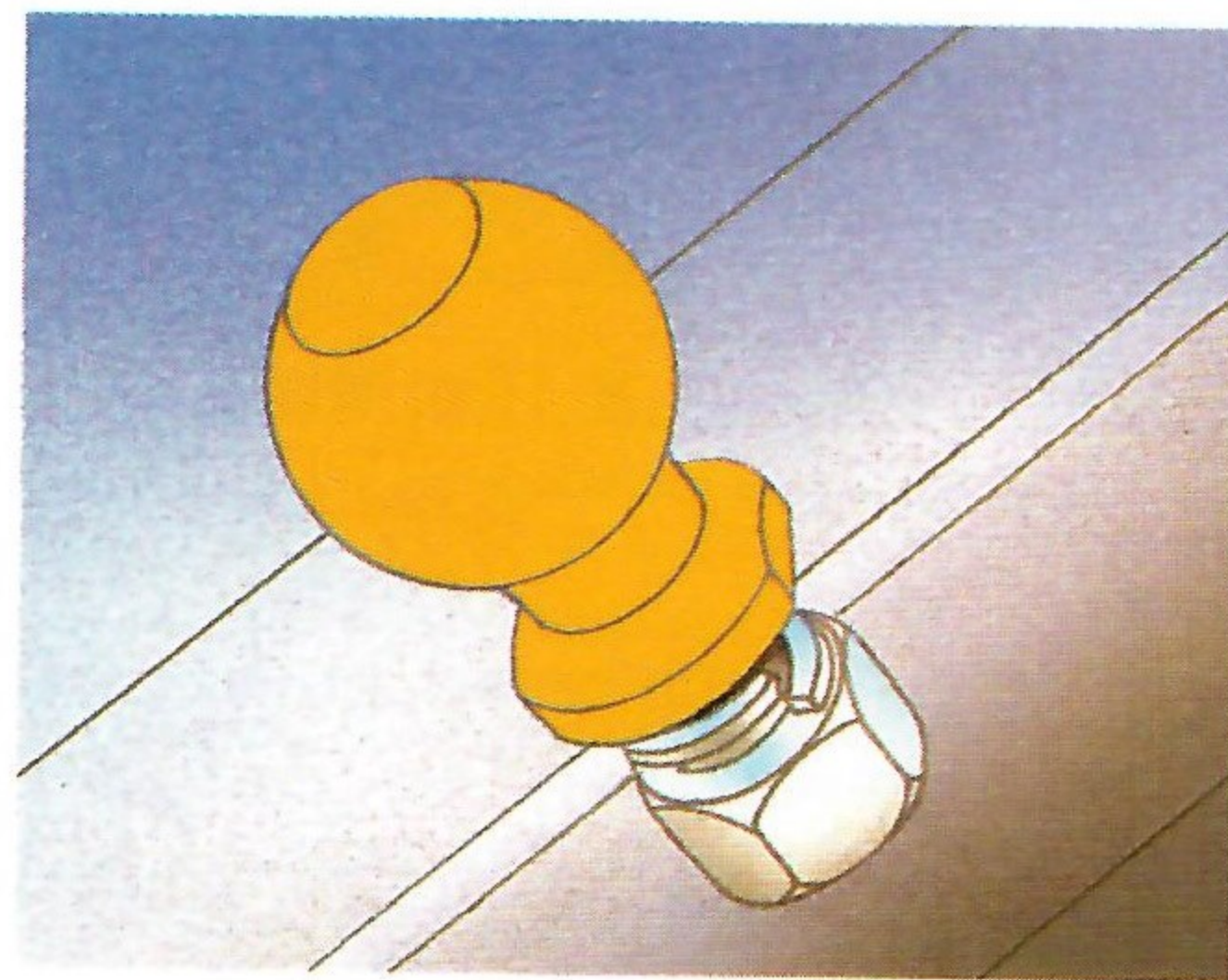
Khaki<sup>2,3</sup>

Silver Metallic<sup>4</sup>

<sup>1</sup>Available on LT. <sup>2</sup>New for '90. <sup>3</sup>Accent color for Tahoe LT. <sup>4</sup>Secondary color only.



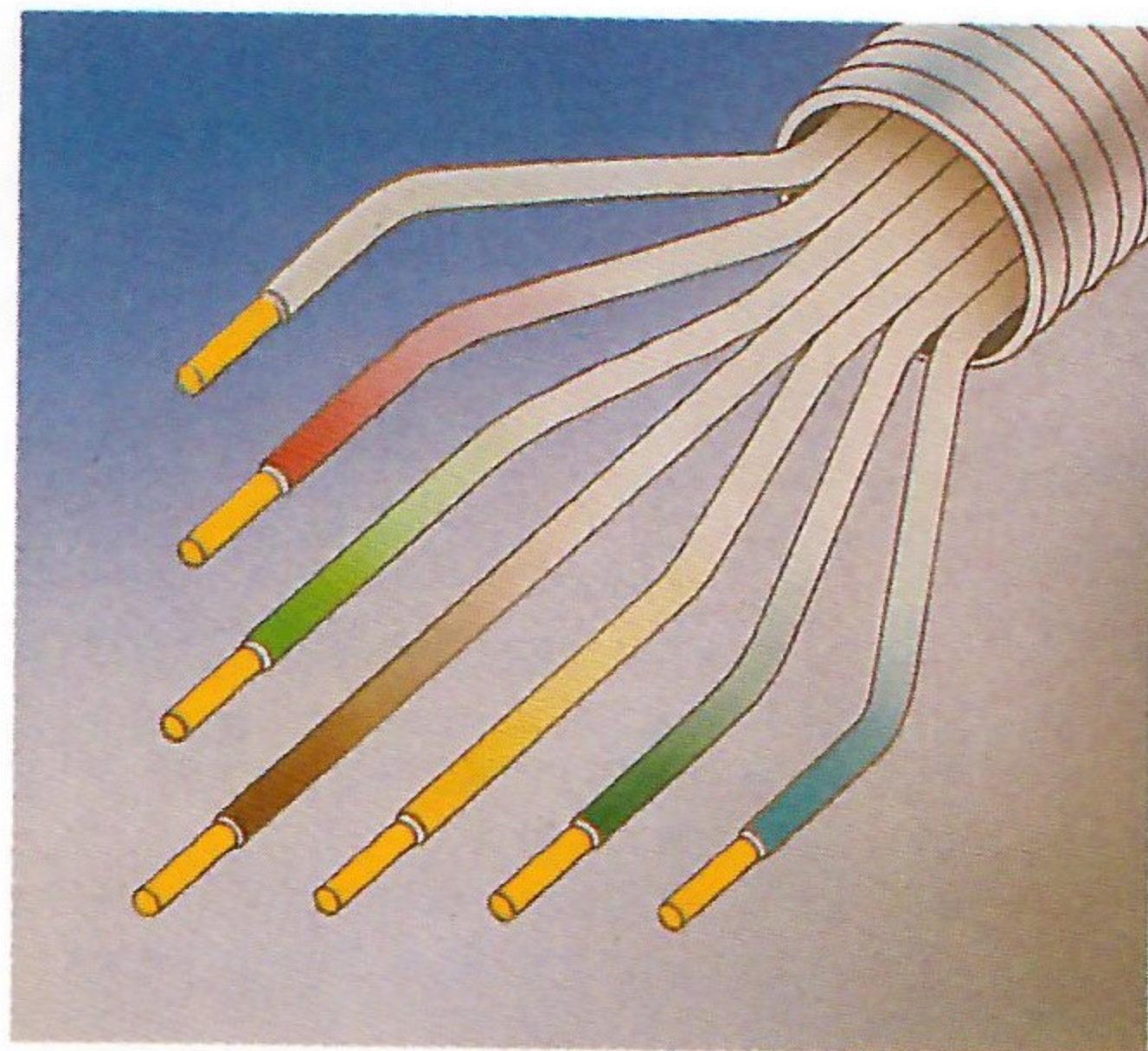
Chevrolet offers a wide selection of available options for trailering, but only a few of them are illustrated and described here. Check with your Chevrolet dealer for complete information on these items, as well as many others, for your S-10 Blazer.



A 1 7/8"- diameter hitch ball (Part No. 981148) is available as an accessory. A 2"- diameter ball (Part No. 980670) is also available for hitches.

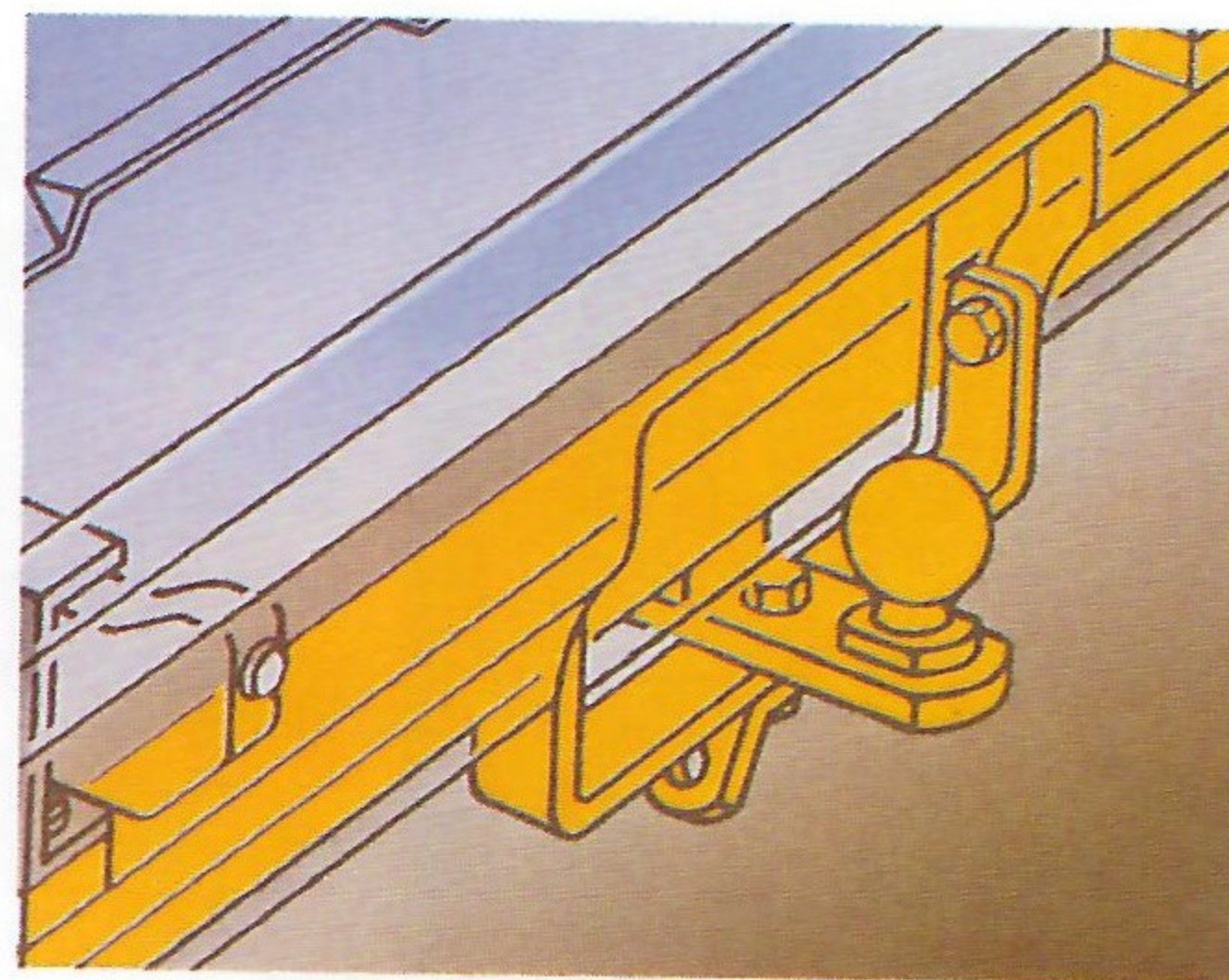
#### MIRRORS

S-10 Blazers used as tow vehicles will require outside mirrors with extensions that exceed the width of the trailer to be towed. Such mirrors are available from outside suppliers. Ask your Chevrolet dealer for additional information.

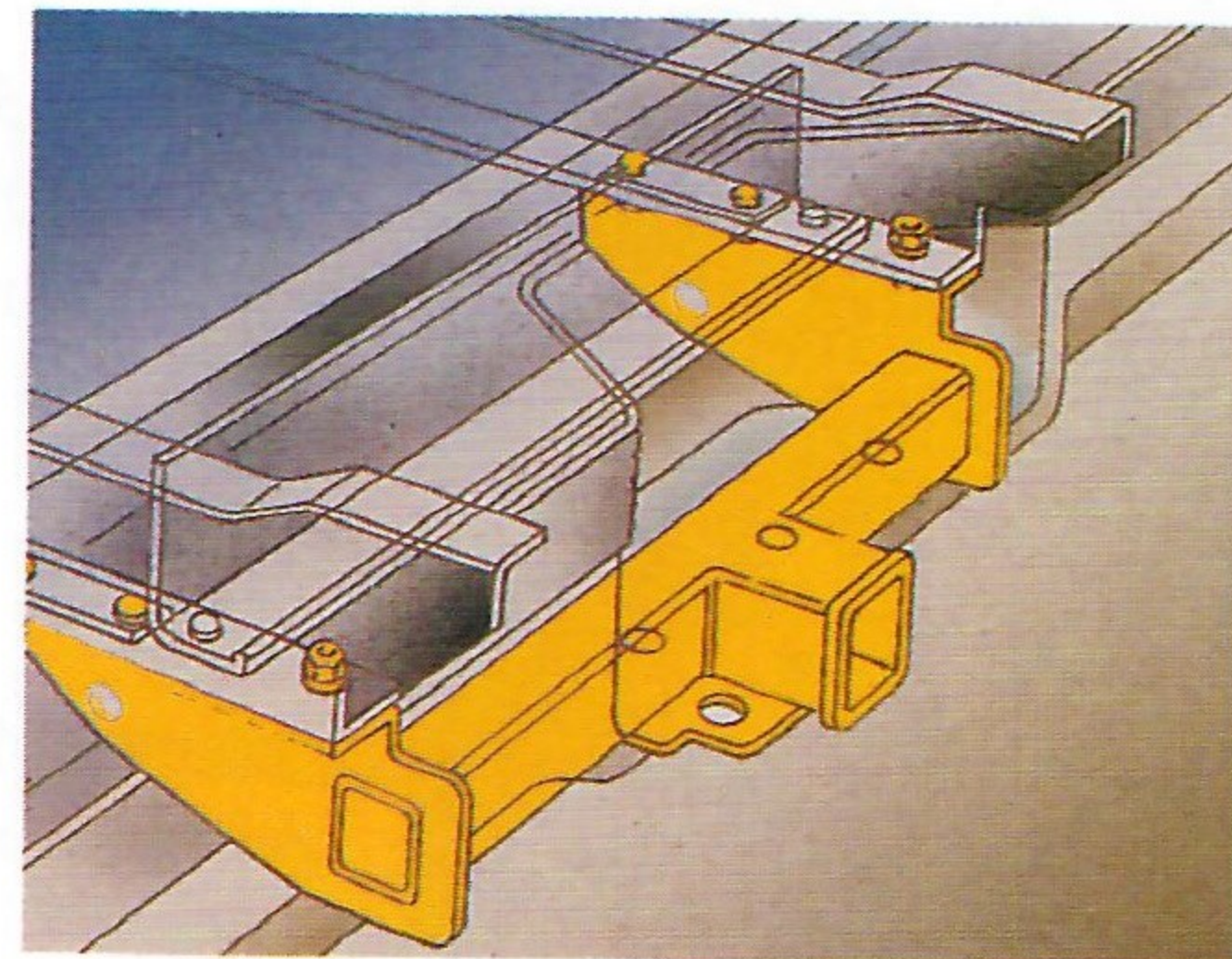


A 5-wire wiring harness is used with trailers up to 2000 lbs. in gross weight, and is included with the Z72 Light-Duty Trailering Special Package. A 7-wire wiring harness is required for larger trailers and is included in the Z82 Heavy-Duty Trailering Special Package. Both harnesses tie into the vehicle's electrical system to provide electricity for your trailer's lights, plus electric brakes or battery charging. The color code shown below should be used when installing trailer wiring harnesses.

- WHITE. Ground.
- RED. Use for battery charging. Connects to starter solenoid (7-wire wiring harness only).
- LIGHT GREEN. Backup lights (7-wire wiring harness only).
- BROWN. Taillights and running lights.
- YELLOW. Left stop and left turn signal.
- DARK GREEN. Right stop and right turn signal.
- BLUE. Use for electric trailer brakes or auxiliary wiring.



Light-duty trailer hitch for hauling trailers up to 2000 lbs. with a maximum tongue load of 200 lbs. A 1 7/8"-diameter ball is included. (This is a dealer-installed accessory and is also included with the Z72 Trailering Special Package. See chart below for part number.)



A weight-distributing hitch platform is required when towing trailers over 2000 lbs. in gross weight. It can be installed quickly and easily. (This is a dealer-installed accessory and is also included with the Z82 Trailering Special Package. See chart below for part number.)

#### DEALER-INSTALLED HITCHES

	Light	Heavy
Maximum Gross Trailer Weight (lbs.)	2000	6000
Maximum Tongue Load (lbs.)	200	750
Type of Hitch	Deadweight <sup>1</sup>	Weight-Distrib. Hitch Platform
S-10 Blazer Part No.	998954	998484 <sup>2</sup>

<sup>1</sup>Deadweight hitch includes 1 1/2" ball. <sup>2</sup>Maximum trailer weight 6000 lbs. Maximum tongue load 750 lbs.

#### GROSS COMBINATION WEIGHT RATING (GCWR)

**THE USE OF GCWRs TO DETERMINE ENGINE, TRANSMISSION AND REAR AXLE RATIO.** Perhaps you prefer to use Gross Combination Weight Ratings (GCWRs) to determine the engine, transmission and rear axle ratio you will require to tow a specific trailer with your S-10

Blazer. The chart below shows you the maximum allowable GCWR based on the 4.3 Liter V6 engine and rear axle ratios with automatic or manual transmissions. The GCWR includes the total loaded weight of both the S-10 Blazer and the trailer.

With Automatic Transmissions		
GCWR (lbs.)	8500	9500
Engine	4.3L V6 Gas w/CPI <sup>1</sup>	4.3L V6 Gas w/CPI <sup>1</sup>
Rear Axle Ratios	3.08	3.42
With Manual Transmissions <sup>2</sup>		
GCWR (lbs.)	6500	7000
Engine	4.3L V6 Gas w/EFI <sup>3</sup>	4.3L V6 Gas w/EFI <sup>3</sup>
Rear Axle Ratios	3.08	3.42 <sup>4</sup>

<sup>1</sup>Central-Port Fuel Injection. <sup>2</sup>RPO V01 Heavy-Duty Cooling is required for towing trailers over 2000 lbs. with a manual transmission. In addition, any other equipment required for S-10 Blazers with automatic transmissions must also be ordered for S-10 Blazers with manual transmissions. <sup>3</sup>Electronic Fuel Injection. <sup>4</sup>GCWR for S-10 Blazer equipped with standard P205/75R-15 tires. GCWR will be reduced by 500 lbs. with optional P235/75R-15 tires.

#### CAUTION

If you don't use the correct equipment and drive properly, you can lose control of your vehicle when you pull a trailer. For example, if the trailer is too heavy, your vehicle brakes may not work well — if at all. Your vehicle passengers and you could also be seriously injured. Pull a trailer only after you have taken all of the following steps.

#### TRAILERING BRAKES

If your trailer weighs more than 1000 lbs. loaded, then it must have its own adequate brakes. Be sure to read and follow the instructions for the electric trailer brake controller so that it is installed, adjusted and maintained properly.

- Don't tap into your vehicle's brake system if the trailer's brake system will use more than 0.02 cu. in. of fluid from your vehicle's master cylinder. If it does, neither braking system will work well. You could even lose your vehicle's brakes.
- The trailer brake parts must be able to take 3000 psi of pressure. If not, the trailer brake system must not be used with your vehicle.
- If everything checks out this far, then have a qualified individual make the brake fluid tap at the port on the master cylinder that sends fluid to the rear brakes. Don't use copper tubing, because it will bend and ultimately break. Use only steel brake tubing.

#### HITCHES

It's important to have the correct hitch equipment. Crosswinds, large trucks going by and rough roads are just a few of the reasons why you'll need the right hitch.

Here are some rules to follow:

- If you'll be towing a trailer that, when loaded, will weigh more than 4000 lbs., be sure to use a frame-mounted, weight-distributing hitch and sway control of the proper size. This equipment is very important for proper vehicle loading and good handling when you're driving.
- If you have to make any holes in the body of your vehicle to install a trailer hitch, be sure to seal the holes if you ever remove the hitch. If they're not sealed, dirt, water and deadly carbon monoxide from the exhaust can get into your vehicle.



## QUALITY PRODUCTS

Every '92 Chevy light-duty truck, van or utility vehicle benefits from computer-aided design, precision manufacturing processes, top-grade materials, quality fit and finish, intensively trained assemblers and a quality-control system that's based on a team concept. Extensive anti-corrosion measures are also taken in each Chevy's manufacture, so additional rustproofing is not required after you buy one.



GM's 3-year/36,000-mile, no-deductible, limited warranty covers repairs for any new light-duty truck, including labor and parts, to correct any defects in material or workmanship occurring during the warranty period. Warranty features include air conditioning repair, towing, no-cost warranty transfer, 6-year/100,000-mile body sheet rust-through protection, and 5-year/50,000-mile emissions control system coverage. Items not covered include tires (which are covered by their manufacturers) and normal maintenance. See your Chevrolet dealer for details, including terms and conditions of this limited warranty.

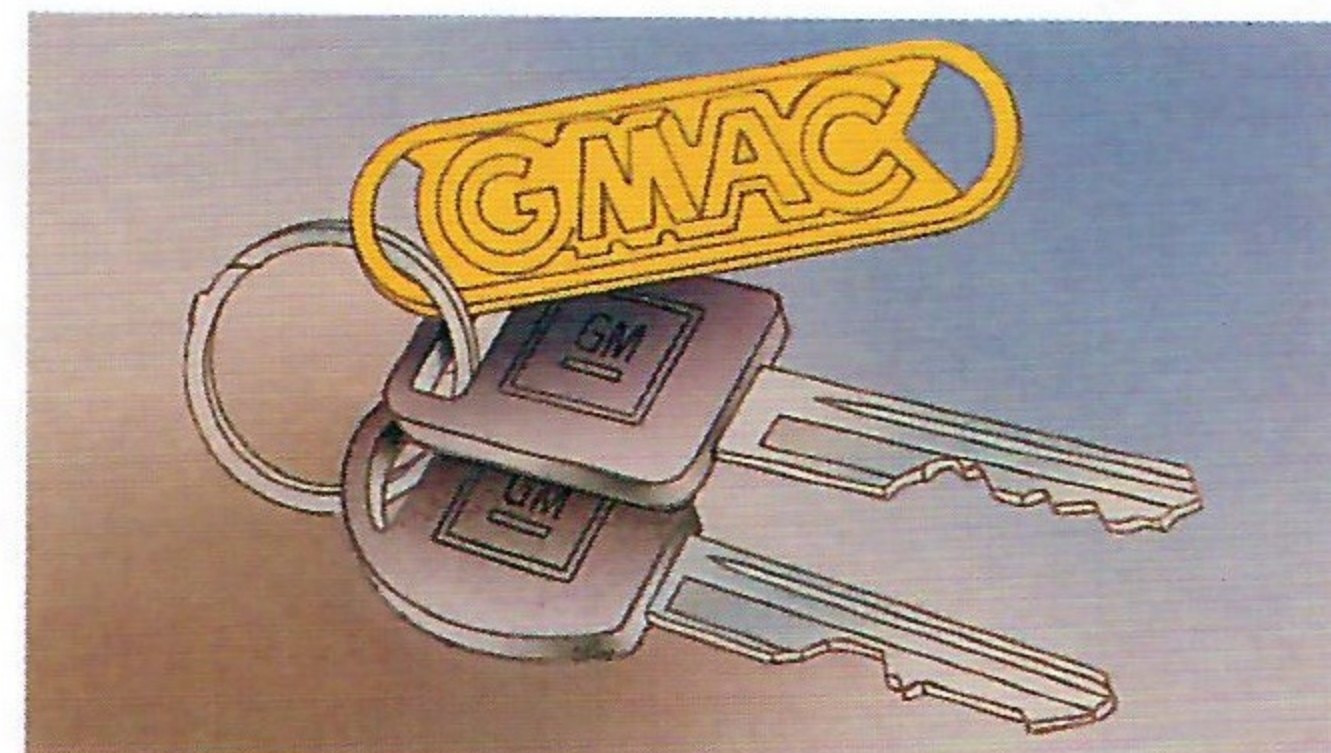
**Chevy's Customer Satisfaction System.** It begins with thorough product inspections throughout the manufacture and assembly of your Chevy S-10 Blazer. And it continues at your Chevy dealer with a detailed pre-delivery inspection of the vehicle before you drive your new Chevy home. Chevrolet then conducts several follow-up activities to stay in touch with you, the customer. For one thing, we ask for and act upon evaluations of vehicle performance and Chevy dealer performance.

Your local Chevy dealership is a vital link in our customer satisfaction system, and a strong one. Your dealer's salespeople will introduce you to the Chevy of your choice, explain all warranties and maintenance schedules and accompany you on an orientation drive to make sure you're thoroughly familiar with your new vehicle's features and operation. Equally important, your dealer's service advisors and technicians are highly trained and equipped with the most up-to-date diagnostic and repair equipment, all to help ensure your long-term satisfaction with maintenance and repair work performed on your Chevy.

When you're traveling long distances, it's also comforting to know there are over 4700 Chevy truck dealers dotting the map of the U.S.A. — each one ready to provide you with professional service and genuine GM parts. What's more, you can telephone the Chevrolet Customer Assistance Center toll free at 1-800-222-1020 to talk to trained experts regarding any Chevrolet product or service problem you may have. The Center is open Monday through Friday, 8:00 a.m. to 7:30 p.m., Eastern Standard Time.

**GM Protection Plan.**

The GM Protection Plan offers service protection in addition to that provided by GM's new-vehicle limited warranty. It is available only in the U.S. and Canada. Ask your dealer about this option.

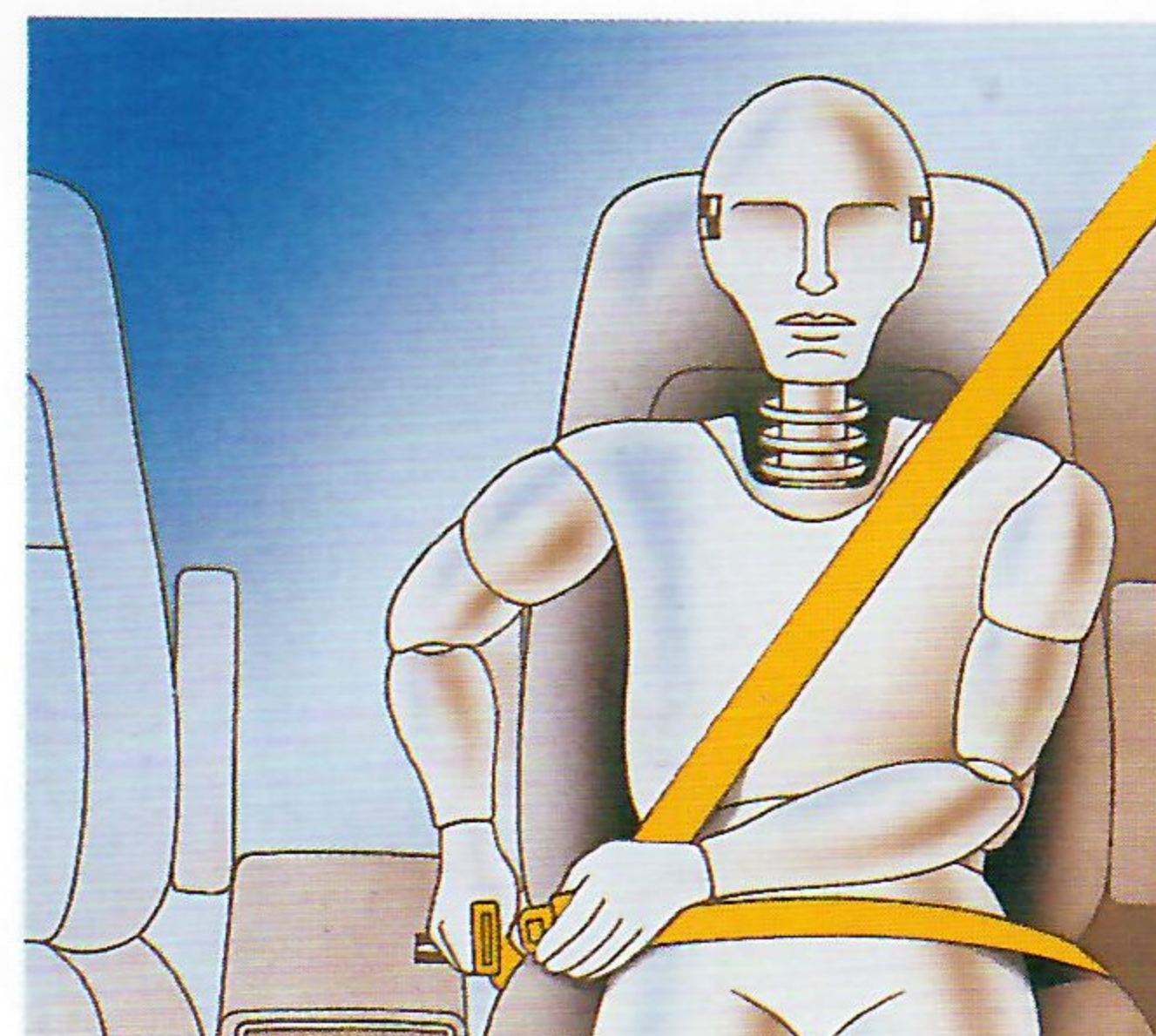
**GMAC Financing.**

At your Chevrolet dealer, financing or leasing your new Chevy S-10 Blazer can be as easy as saying GMAC. Ask about GMAC's SMARTLEASE programs for leasing new Chevys.

**Chevy's Roadside Assistance Center.**

The security of round-the-clock roadside assistance is available for every Chevy owner via a toll-free hot line. Your call will be answered by a Roadside Service phone advisor trained by Chevrolet and experienced with your vehicle. You will be placed in contact with a nearby service center, and assistance with towing and other helpful services will be arranged. Please ask your Chevy dealer for more details.

## SAFETY ENGINEERING



GM leads the world in automotive safety research, and valuable lessons learned in exhaustive product testing are reflected in every new vehicle at your Chevy dealer.

GM backs up its commitment to automotive safety with the industry's largest safety research and test facilities (people as well as capital) at several facilities, including the Milford Proving Ground and GM Technical Center in Michigan.

Over many years, GM's safety innovations have contributed significantly to reducing the fatality rate on U.S. streets and highways.

The Chevrolet vehicles being built today are truly state-of-the-art in terms of safety engineering. Good "crash performance," the most tangible element of occupant protection, is achieved through a combination of energy management and energy dissipation through the structure of the vehicle. The use of test dummies like the one shown above has also helped GM engineers to assess the injury potential for occupants in various types of accidents.

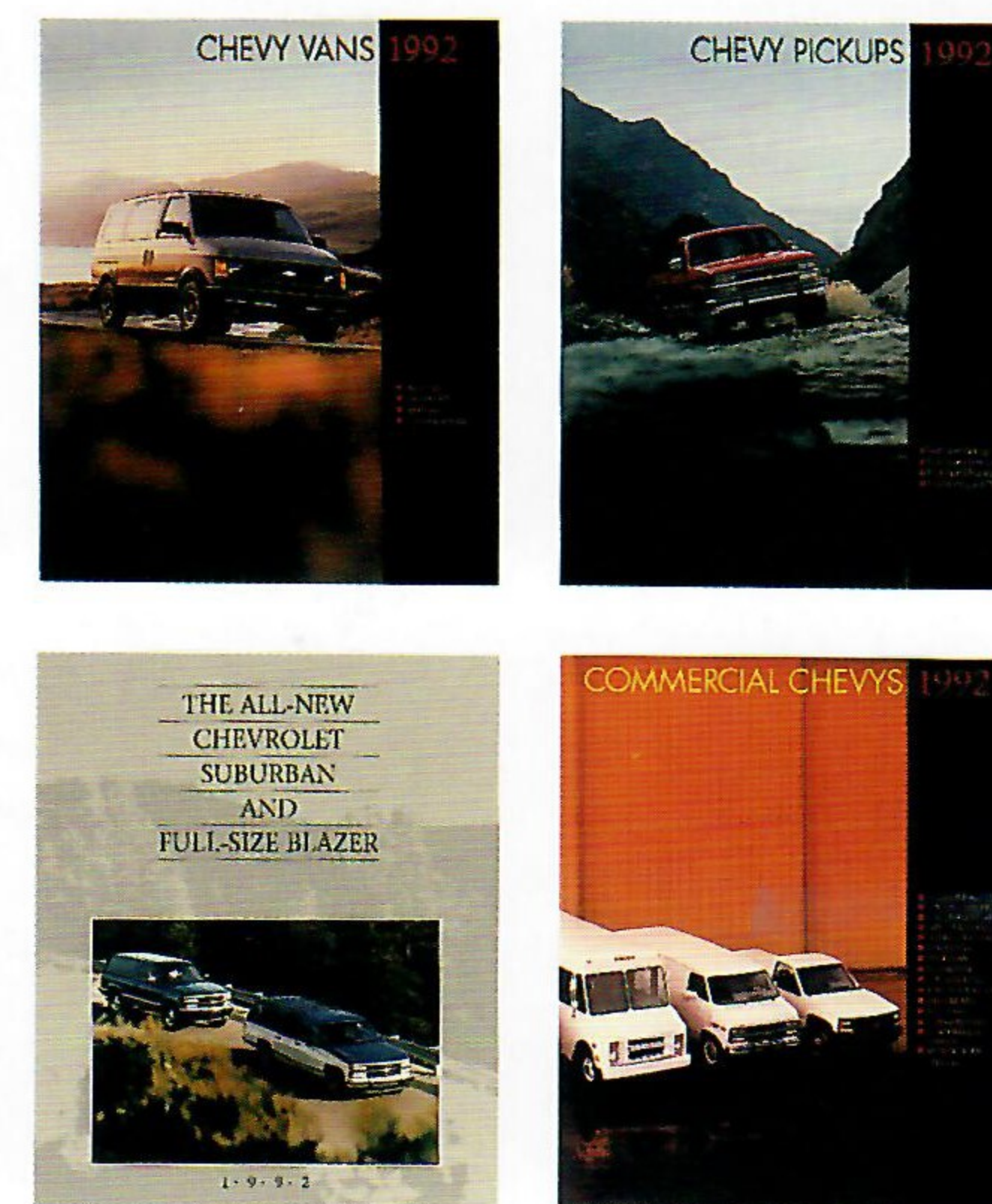
Every 1992 Chevy S-10 Blazer has the following safety features to help protect you and give you real peace of mind:

**Occupant Protection.**

- Manual lap/shoulder safety belts, outboard front and rear seat positions
- Manual lap safety belts, center front/rear seat positions, where applicable
- Energy-absorbing steering column
- Energy-absorbing instrument panel
- Energy-absorbing front seat-back tops
- Interlocking door latches
- Inertia-locking, folding front seat-backs (two-door models)
- Safety armrests
- Breakaway inside rearview mirror
- Security door lock and door retention components
- Laminated windshield glass
- Tempered safety glass in side windows and rear windows
- Dual sun visors
- Pressure relief fuel system.

**Accident Avoidance.**

- Side marker lamps and reflectors
- Parking lamps that illuminate with headlamps
- Four-way hazard warning flashers
- Backup lamps
- Directional signal control with lane-change feature
- Windshield defogger, washer and multi-speed wipers
- Outside left and right rearview mirrors
- Brake system with dual master cylinder and warning light
- Starter safety switch
- Dual-action hood latch
- Low-glare finish on inside windshield moldings, wiper arms and blades, and metallic steering wheel surfaces
- Illuminated heater and defogger controls
- Tires with built-in tread wear indicators
- Safety road wheel rims
- Inside manual day/night rearview mirror
- Audible brake lining wear indicators (disc brakes)
- Four-wheel anti-lock brake system (ABS).

**A Word About 1992 Chevy Truck Brochures.**

In addition to this brochure, *Chevy S-10 Blazer*, you may wish to have the other four 1992 Chevy truck brochures. Three of them — *Chevy Vans*, *Chevy Pickups*, and *The All-New Chevrolet Suburban and Full-Size Blazer* — will give you an excellent overview of Chevrolet's many personal-use light-duty trucks, beyond S-10 Blazer. The fourth — *Commercial Chevys* — describes the many Chevy trucks designed specifically for hard work in business and industry. Feel free to ask your Chevy dealer for any of these additional brochures, depending on your needs and interests.



## AN ENVIRONMENTAL PERSPECTIVE

■ Chevrolet takes considerable pride in its ability to provide high-quality vehicles for the growing sport of off-roading. However, as providers of such vehicles, we also share responsibility for the preservation of that which makes the very thrill of off-roading possible: the natural environment. We share that responsibility with you, the individual off-roader. And we ask you to join us in a "pro-environment" attitude as you pursue the many pleasures of "four-wheeling." As the source for many types of light-duty trucks, Chevrolet encourages you to drive at least as carefully off-road as on-road — and to do your part to help preserve the beauty of America's wildlands.



## ADDITIONAL INFORMATION

**Important: A Word About This Catalog.** We have tried to make this catalog as comprehensive and factual as possible. We reserve the right, however, to make changes at any time, without notice, in prices, colors, materials, equipment, specifications, models and availability. Since some information may have been updated since the time of printing, please check with your Chevrolet dealer for complete details.

**A Word About Assembly.** Chevrolets are assembled by different operating units of General Motors, its subsidiaries or suppliers to GM worldwide. Chevrolets incorporate thousands of components produced by different operating units of GM, its subsidiaries or suppliers to GM worldwide. We sometimes find it necessary to produce Chevrolets with different or differently sourced components than originally scheduled. All such components have been approved for use in Chevrolets and will provide the quality of performance associated with the Chevrolet name. Since some options may be unavailable when your vehicle is assembled, we suggest that you verify that your vehicle includes the equipment you ordered or, if there are changes, that they are acceptable to you.

**A Word About Engines.** Chevrolets are equipped with engines produced by different operating units of GM, its subsidiaries or suppliers to GM worldwide.

**A Word About Updated Service Information.** Chevrolet regularly sends its dealers useful service bulletins about Chevrolet products. Chevrolet monitors product performance in the field. We then prepare bulletins for servicing our products better. You can get these bulletins, too. Ask your dealer. Or, to get ordering information, call toll free: 1-800-551-4123.

**A Word About Corrosion Protection.** Chevrolets are designed and built to resist corrosion. All body sheet metal components are warranted against rust-through corrosion for 6 years/100,000 miles. Application of additional rust-inhibiting materials is not required under the corrosion coverage.

Chevrolet, the Chevrolet emblem, GM, the GM emblem, S-10 and Blazer are registered trademarks of the General Motors Corporation. Chevy, Tahoe and Insta-Trac are trademarks of the General Motors Corporation. SMARTLEASE is a service mark of General Motors Acceptance Corporation. ©1991 GM Corp. All rights reserved.







THE HEARTBEAT OF AMERICA  
IS WINNING.